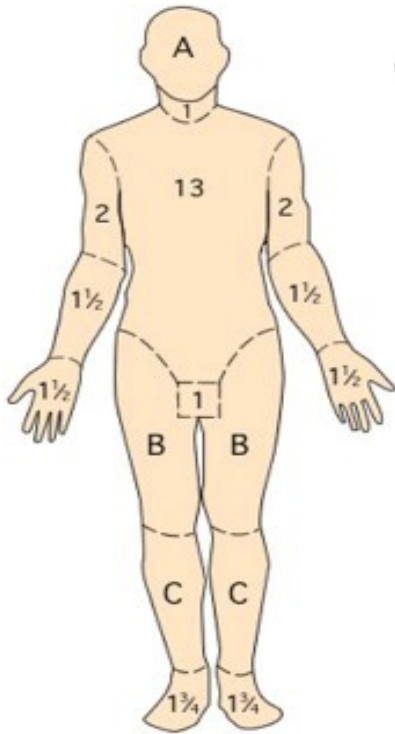
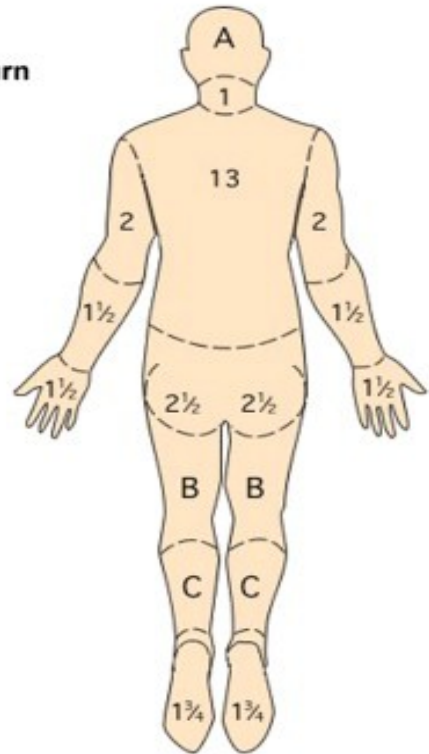


Lund and Browder Chart



% Total Body Surface Area Burn
Do not include erythema



REGION	%	
	PTL	FTL
Head		
Neck		
Ant. Trunk		
Post. Trunk		
Right Arm		
Left Arm		
Buttocks		
Genitalia		
Right Leg		
Left Leg		
Total Burn		

AREA	Age 0	1	5	10	15	Adult
A = 1/2 of head	9 1/2	8 1/2	6 1/2	5 1/2	4 1/2	3 1/2
B = 1/2 of one thigh	2 3/4	3 1/4	4	4 1/2	4 1/2	4 1/4
C = 1/2 of one lower leg	2 1/2	2 1/2	2 3/4	3	3 1/4	3 1/2

Weight:

Height:

$$\text{Body surface Area} = \sqrt{((\text{weight} \times \text{height}) / 3600)}$$

Consensus Formula

1/2 in the first 8h
1/2 in the last 16h

$$4\text{ml/kg/\%TBSA}$$

$$\text{Urine Output} = 1\text{ml/kg/h}$$

	With TBSA >10%
	Periferic vein access
	Bladder catheter
	Child: Paracetamol 10mg/kg/EV Adult: Paracetamol 1gr EV
	Blister debridment
	Medication with paraffin gauze
	With TBSA>25%
	CVC
	2 Periferic Vein

NB on urine reservoir write: Place, date, hour

	ELECTRICAL BURNS
	ECG
	Cardiac Enzyme

CHEMICAL

Wash with water for 30-60 minutes

DON'T Use Water if poshorous suspect

AVOID Pain: Paracetamol 20mg/kg

Adult: Paracetamol 1gr + Tramadol 1mg/kg

Child: Paracetamol 10mg/kg + Tramadol 0,5mg/kg

	Child 1-12 Months	Child 1-12 Years	Adult
OS	Morphine 100 mcg/kg x os every 2h	Morphine 200-400 mcg/kg x os every 2h	Morphine: 10-15 mg every 1-2h
EV	Morphine 10 mcg/kg x ev repeated at 3-5 minutes	Morphine 20 mcg/kg x ev repeated at 3-5 minute	Morphine: 1-2 mg repeat every 3-5 minutes

No Subministrate Antibiotic Profilaxsys